



SATELLIGENCE

Arjen Vrielink / Director
vrielink@satelligence.com

EARTH
OBSERVATION
FOR
NATURAL CAPITAL





CUSTOMER FOCUSED ACTIONABLE INFORMATION

Real time

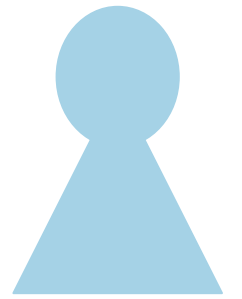
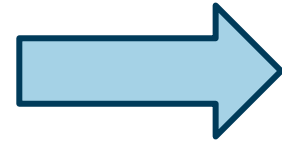
Reliable & unbiased

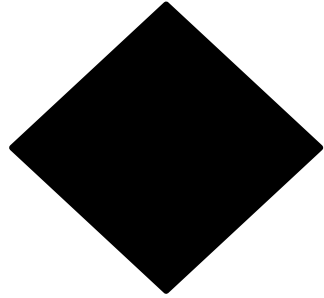
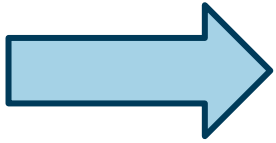
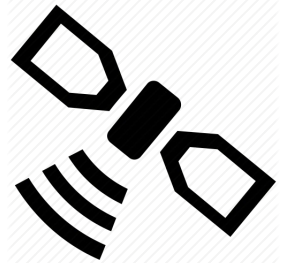
Relevant

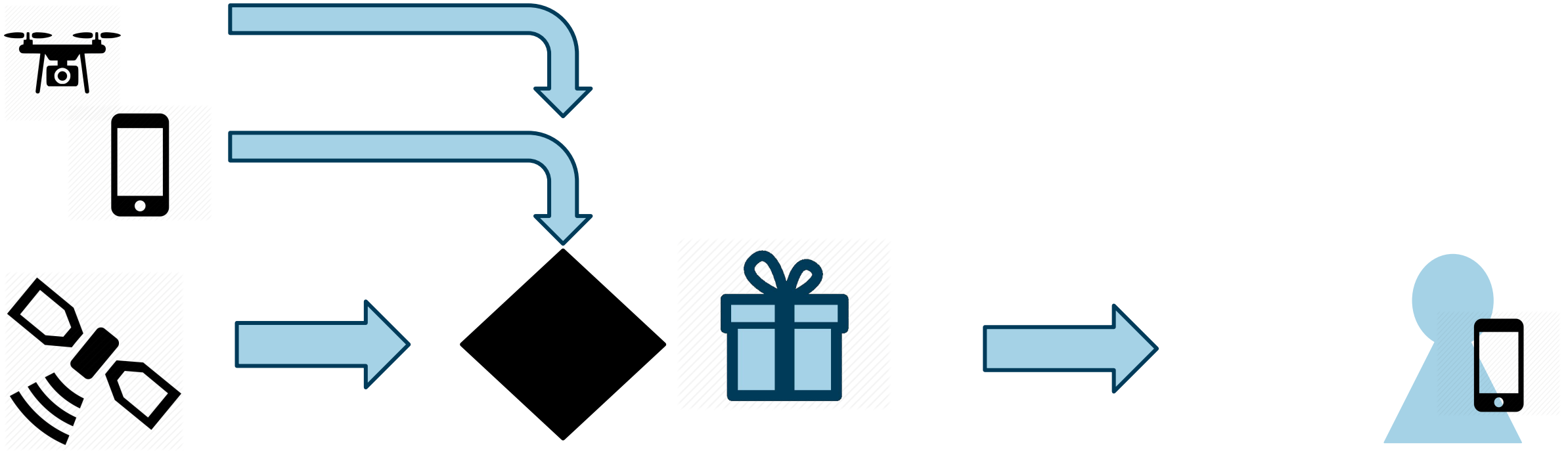


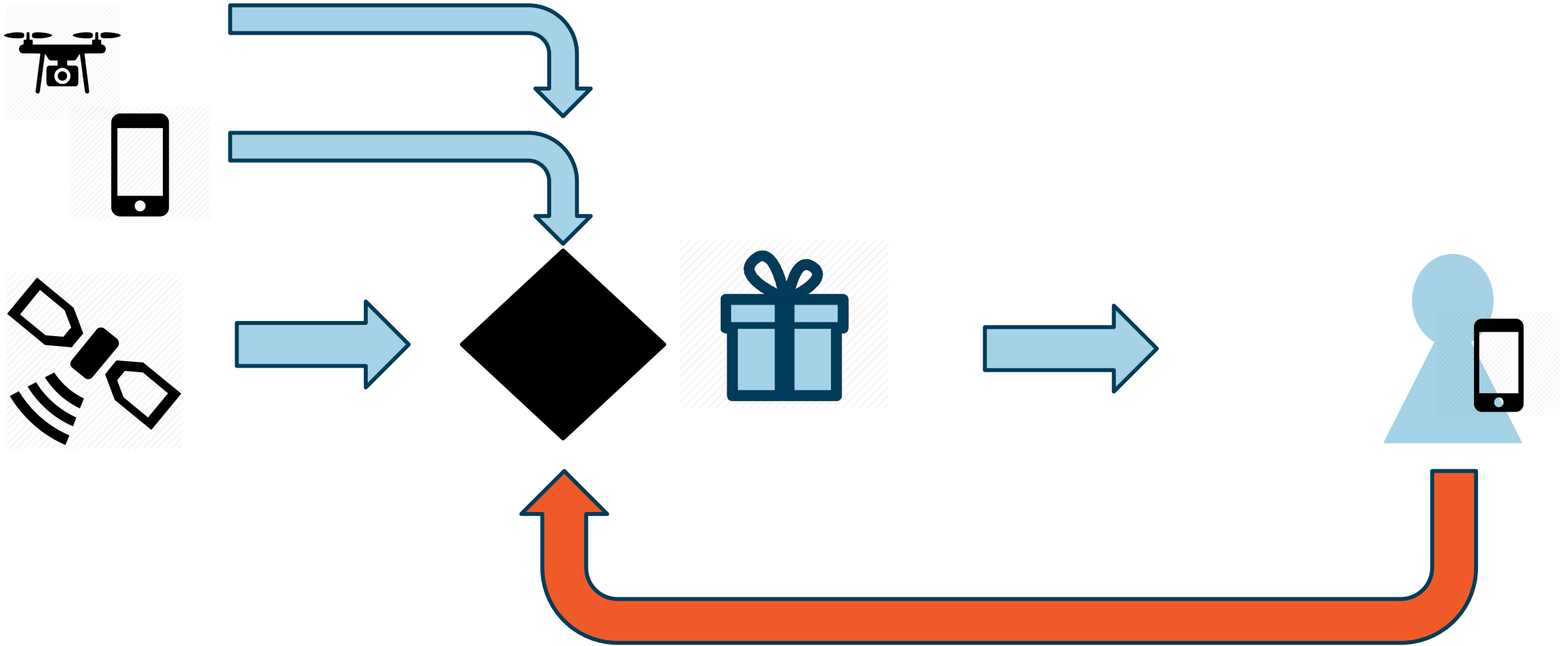












SMART FOREST & COMMODITY **ANALYTICS**



SUPPLY CHAIN RISK MONITORING

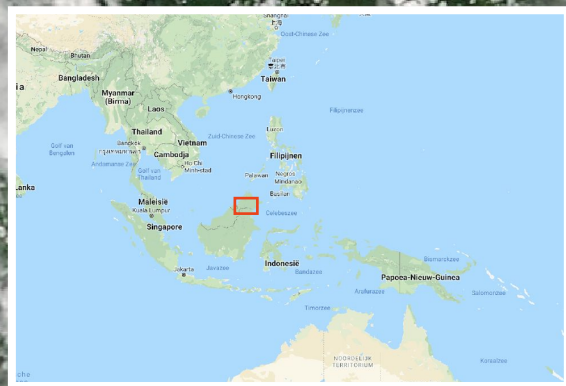
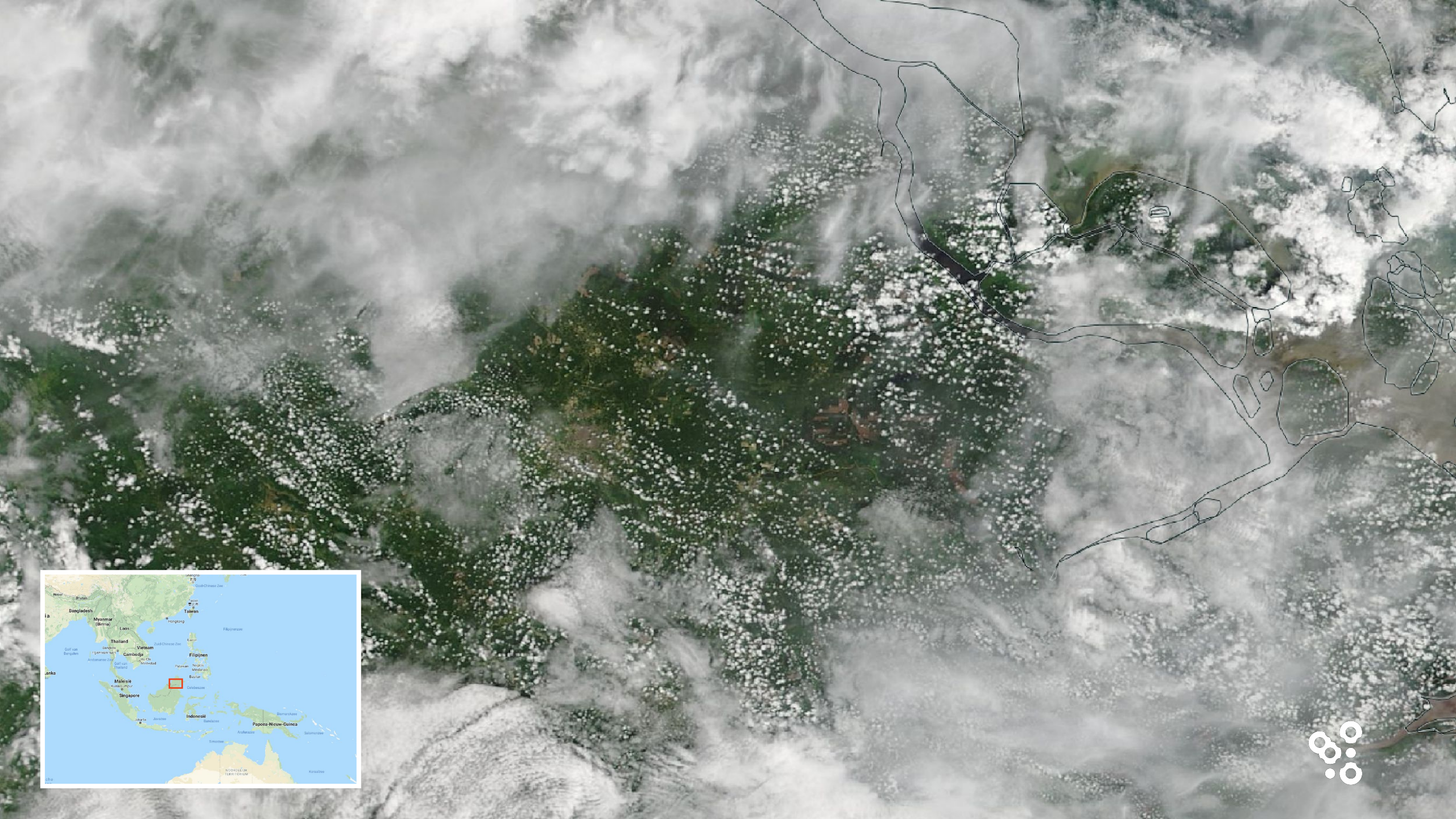
Where are low risk plantation
smallholders that require **financing**
for replanting?



SUPPLY CHAIN RISK MONITORING

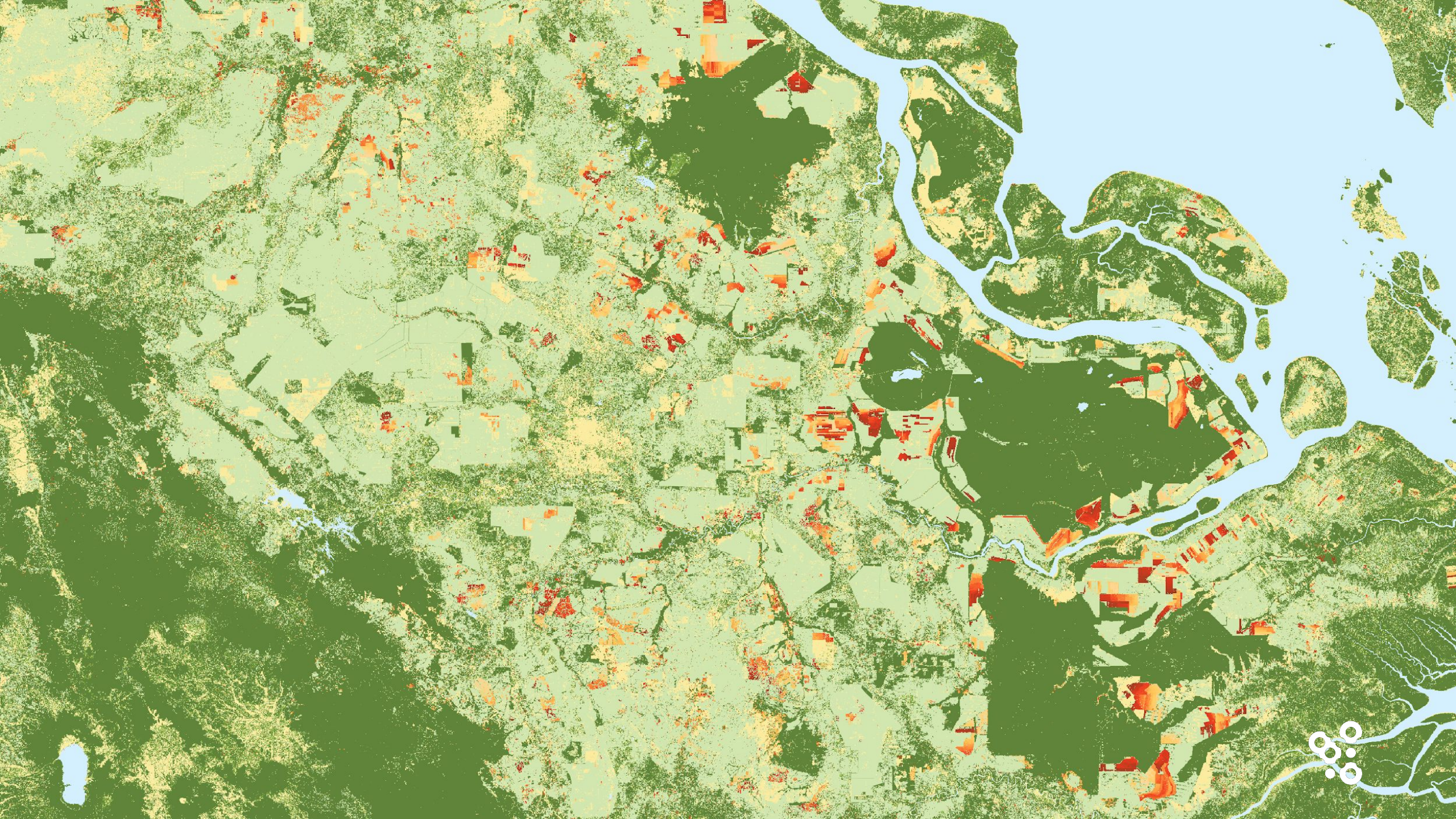
How much **deforestation** is happening or happened in my investment area?

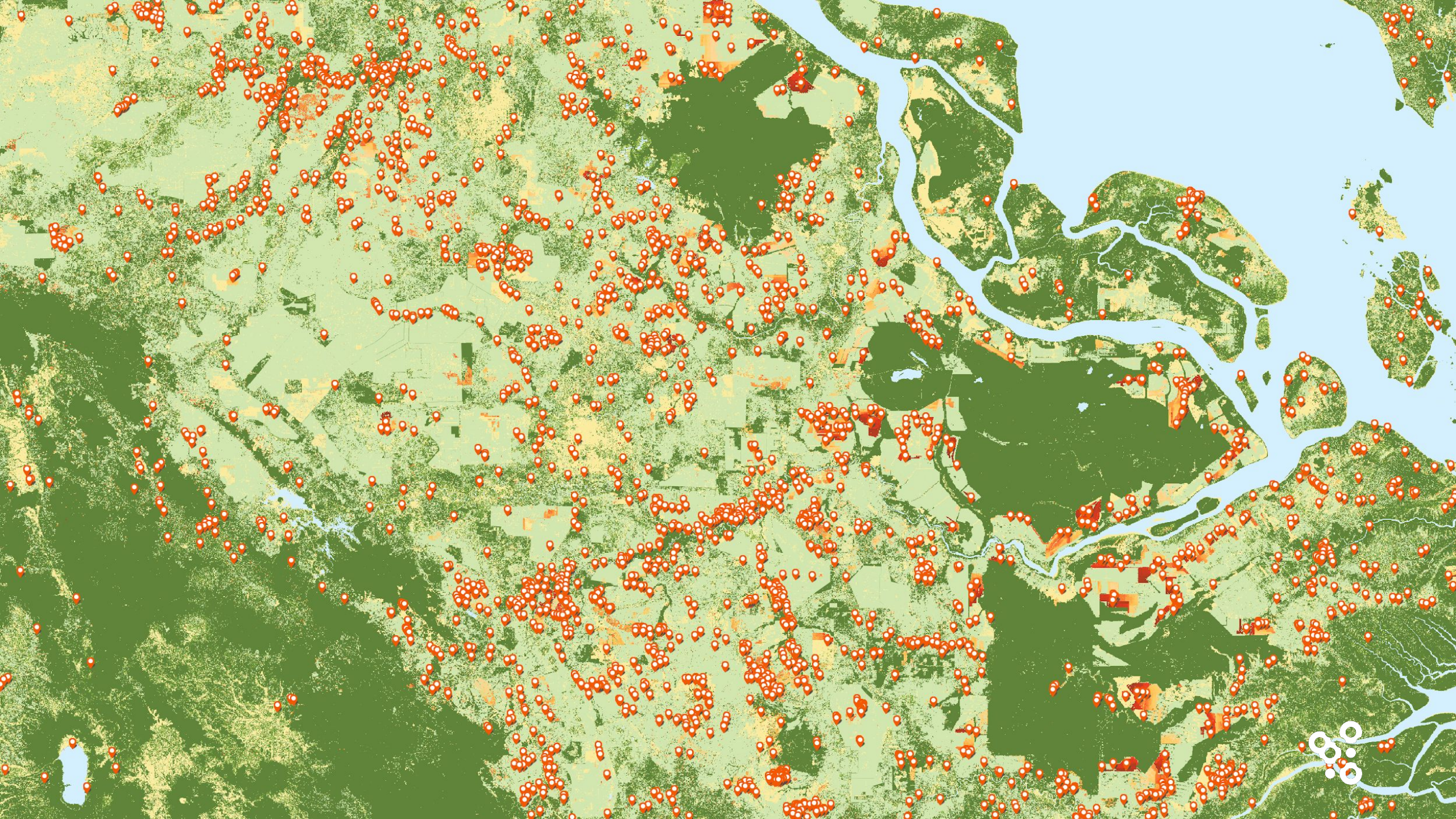














Alert Bulletin Deforestation

- Tailored selection of **relevant** change

- Natural forest
- Forest
- Water
- Deforestation 2015
- Deforestation 2014





#7

DEFORESTATION ALERT BULLETIN PENINSULAR

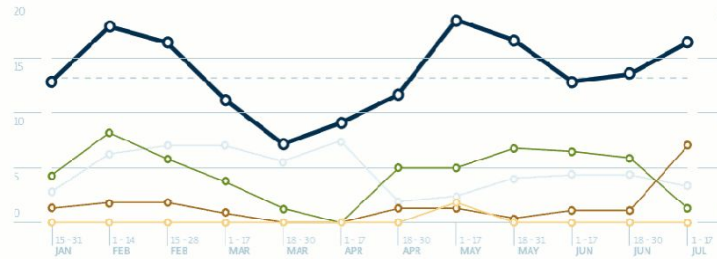
1 JULY – 17 JULY, 2017

OVERVIEW OF DEFORESTATION ALERTS

Number of deforestation alerts, 1 July – 17 July, 2017

	Total	Peatland	Mangrove	Non-Forest	Natural Park	Cession Area
	13	8	1	4	1	0
	263 ha	130 ha	18 ha	100 ha	15 ha	-

Deforestation alerts over a longer period of time



Bulletin

This Bulletin presents the detected deforestation alerts in Peninsular Malaysia. These areas are detected using satellite imagery, and is developed for use by the IOI group. Deforestation alerts have been selected based on this methodology:

- All deforestation patches of at least 10 ha, as well as individual deforestation patches, whose area is 10 ha within a distance of no more than 500 m of each other, are incorporated.

- when within a peatland area (with a buffer of 300m), deforestation patches of at least 5 ha within a distance of no more than 500 m of each other, are incorporated
- Special Areas are:
 - Mangroves
 - Cession areas
 - Peatland
 - Natural Parks (WDPA)

ACTIONABLE ANALYTICS

- **Historical** and **real time** data
- real-time deforestation **alert bulletin**
- Also **crop status** or **floods**



SMART ANALYTICS THAT ENABLES YOU TO ACT



**Responsible supply
chain monitoring**



**Investments and
portfolio management**



**Sustainable
development goals**



Certification





RESPONSIBLE SUPPLY CHAIN MONITORING

Prioritized deforestation **alerts**

Monitor plantation performance

Decrease and mitigate **risk**

Plan investments and increase production.



WHAT SETS US APART?





SMART ANALYTICS

- **Realtime** be the first to know, nobody does it as fast as us
- **Reliable and unbiased** be sure of what you know
- **Relevant** know what *you* need to know



ABOUT OUR POSITIVE IMPACT

We create **actionable** information from space data to enable our clients to **feed the world** while protecting the world's **natural resources**



COPERNICUS LAND MONITORING **SERVICE**



WHAT IS IT?

"The Copernicus Land Monitoring Service (CLMS) provides geographical information on land cover and on variables related, for instance, to the vegetation state or the water cycle.

It supports applications in a variety of domains such as spatial planning, forest management, water management, agriculture and food security."





BUSINESS MODEL

B2C

B2B

M2M

?



BUSINESS MODEL

B2C

B2B

M2M

S2S





Vegetation

Energy

Water

Cryosphere

Hot Spots

Home

The Copernicus Global Land Service (CGLS) is a component of the Land Monitoring Core Service (LMCS) of Copernicus, the European flagship programme on Earth Observation. The Global Land Service systematically produces a series of qualified bio-geophysical products on the status and evolution of the land surface, at global scale and at mid to low spatial resolution, complemented by the constitution of long term time series. The products are used to monitor the vegetation, the water cycle, the energy budget and the terrestrial cryosphere.

[Read more](#)

Latest news

One day of missing Sentinel-3 input observations
Tue, 05 Jun 2018

Help us improve our Land Cover maps - extended deadline!
Fri, 25 May 2018

First Lake Water Quality products
Fri, 25 May 2018

Annual satisfaction survey launched!
Mon, 14 May 2018

[Read more](#)

User support corner

- Leaflet
- Product portfolio
- Contact us
- FAQ

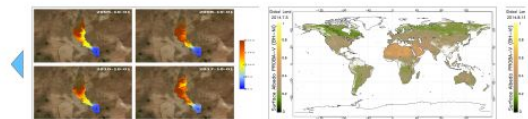


In the picture

38 TB
downloaded in 1st quarter
2018

2800th
user registered for online
access

Drought
surveillance
in Sri Lanka
by CGIAR's IWMI



CLMS **VS** SFCA

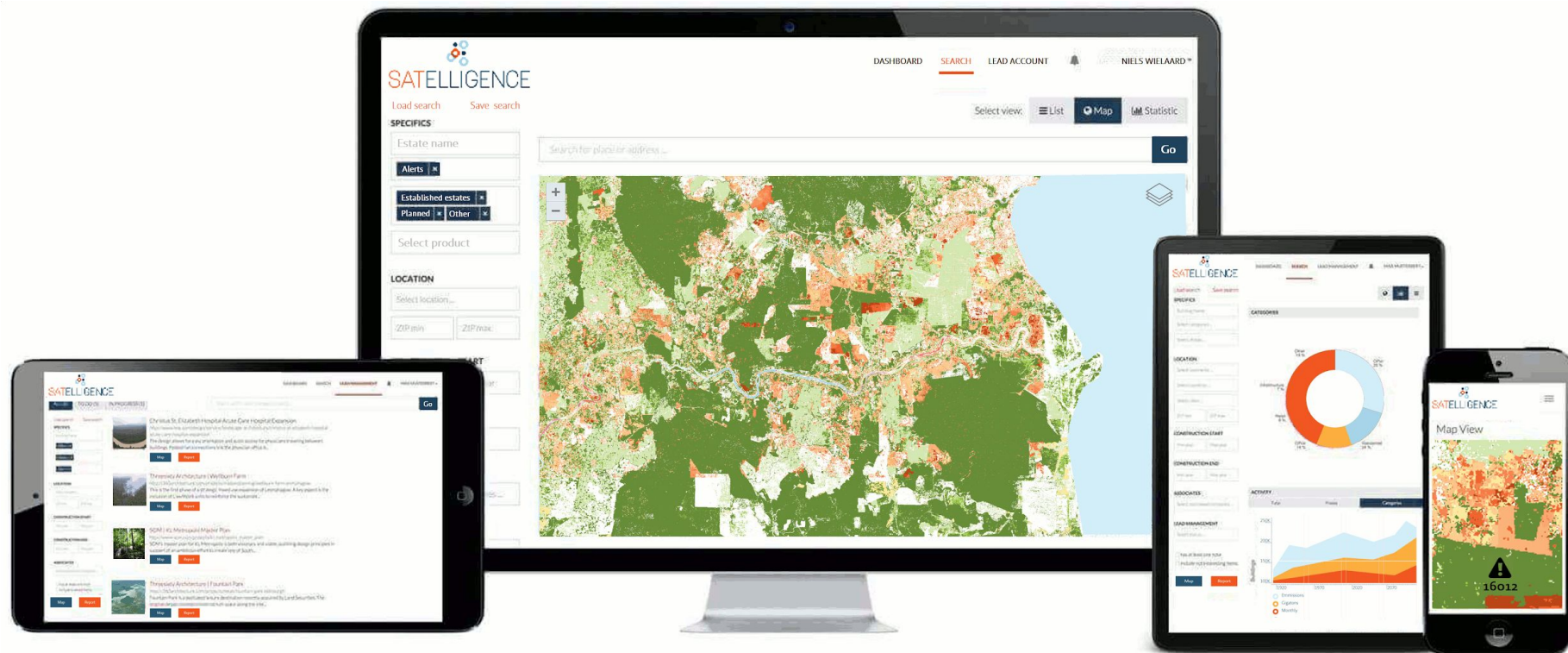


FOOD SECURITY

How to **feed** 2 billion more mouths
in 2030?



CONTINUOUSLY UPDATED COMMODITY MAP OF THE WORLD



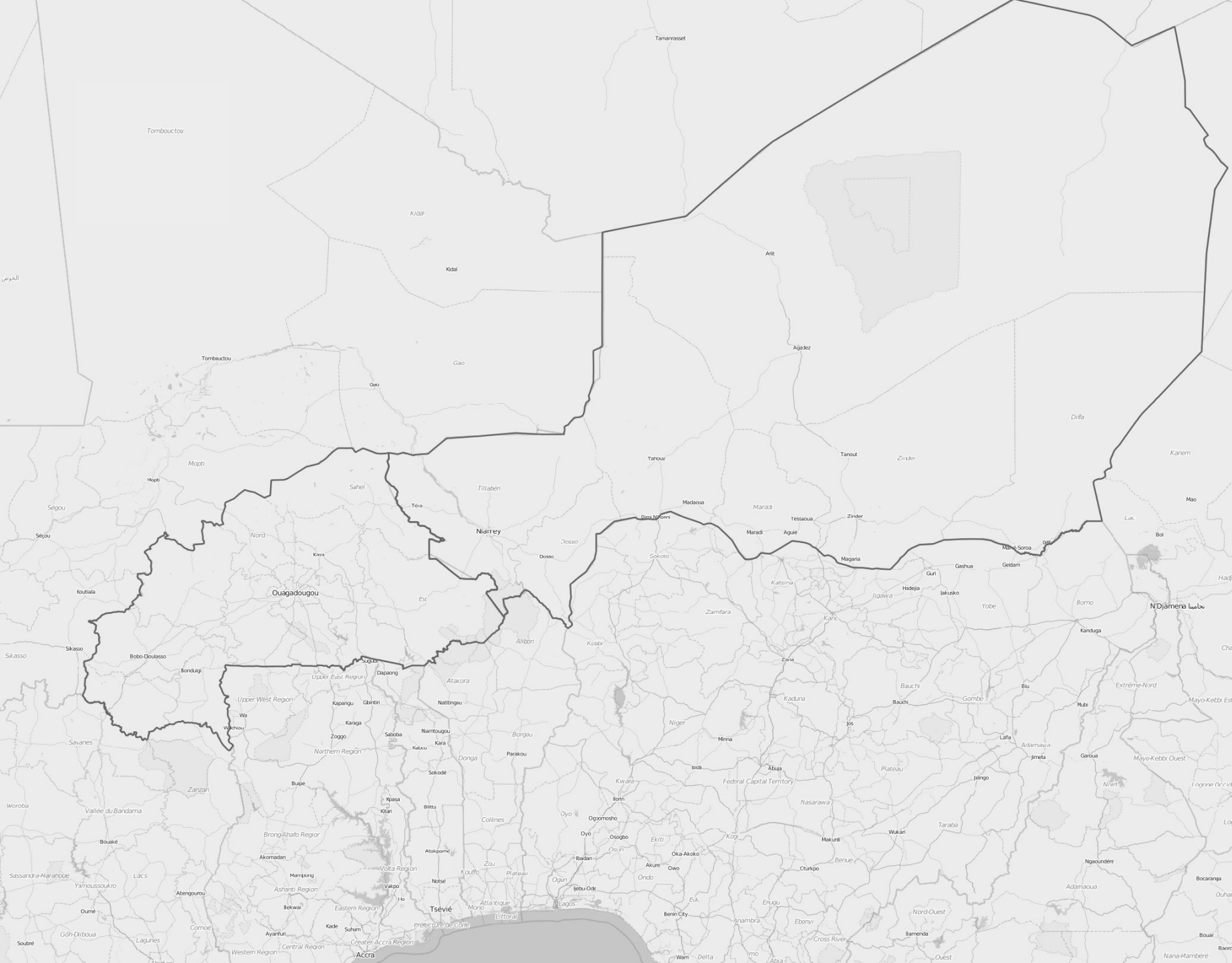




Burkina Faso

Niger

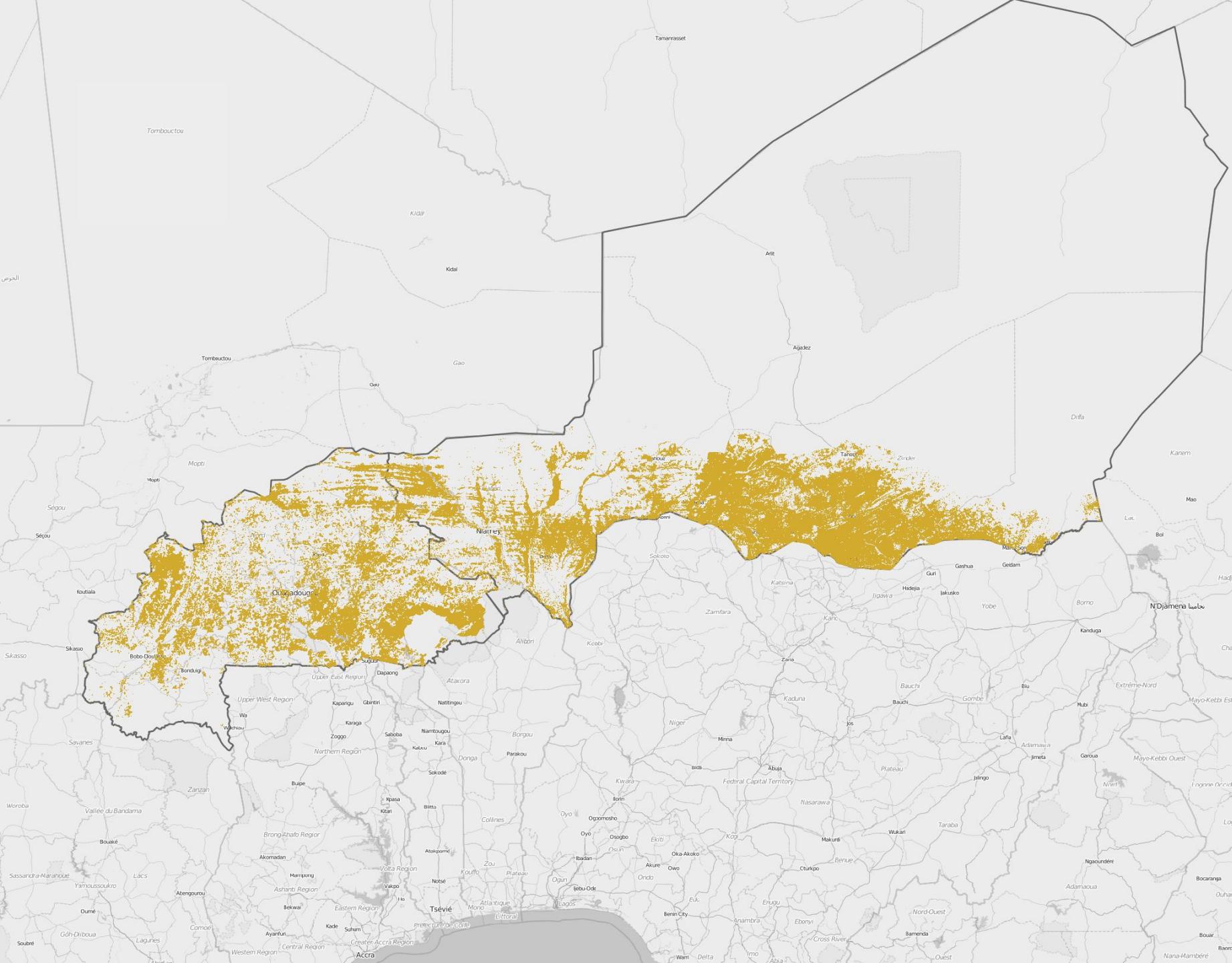




Burkina Faso

Niger





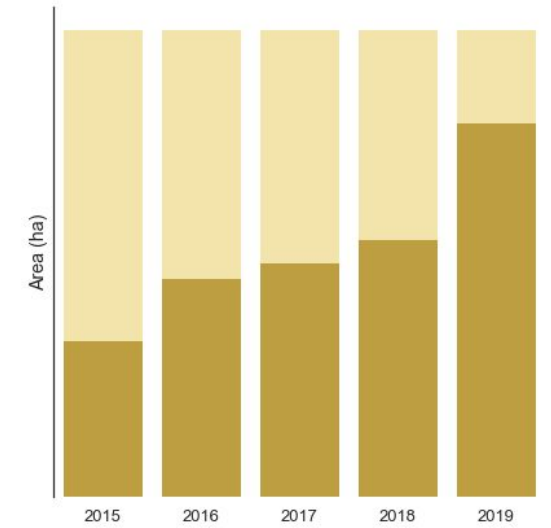
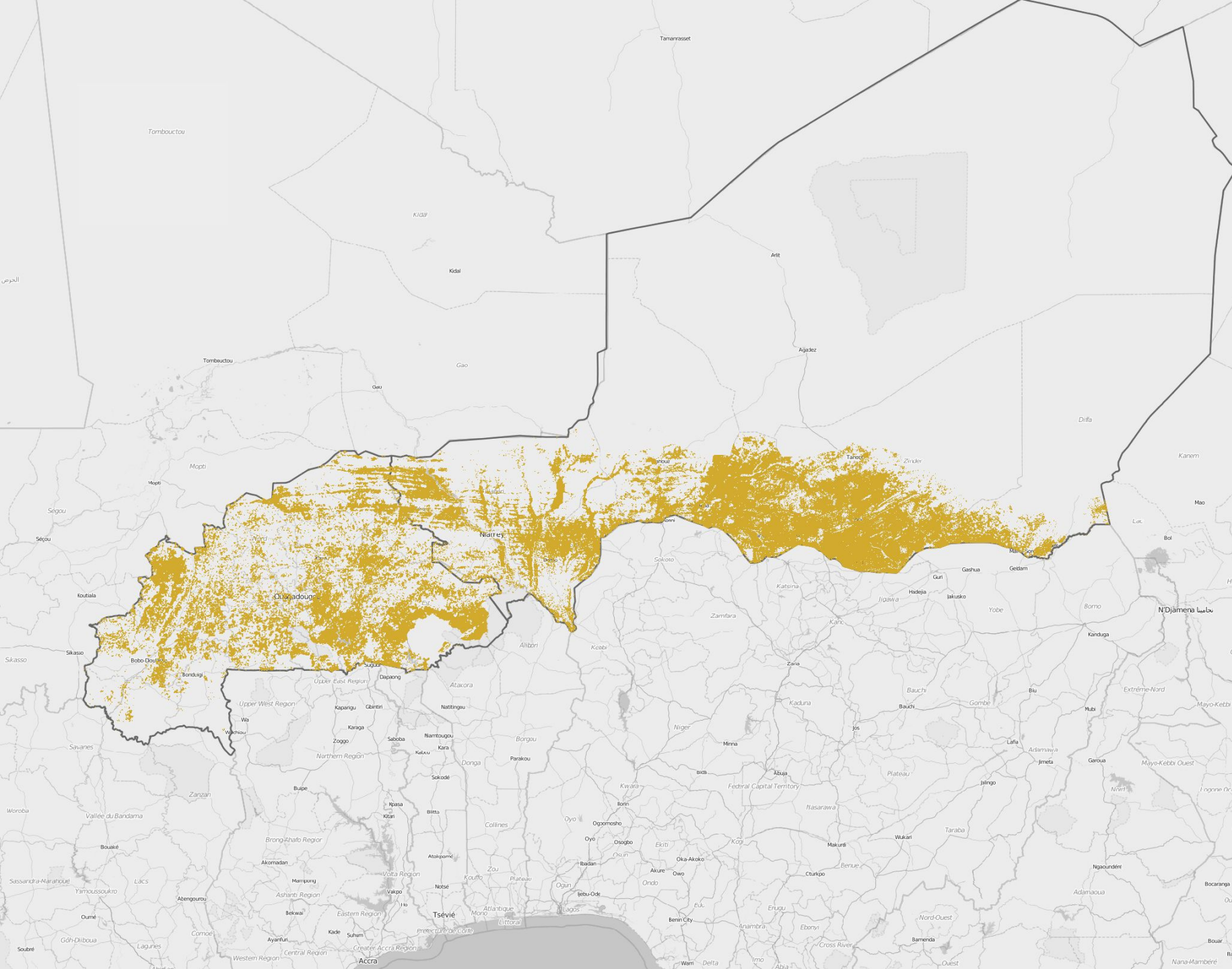
Cultivated area

 Cultivated area



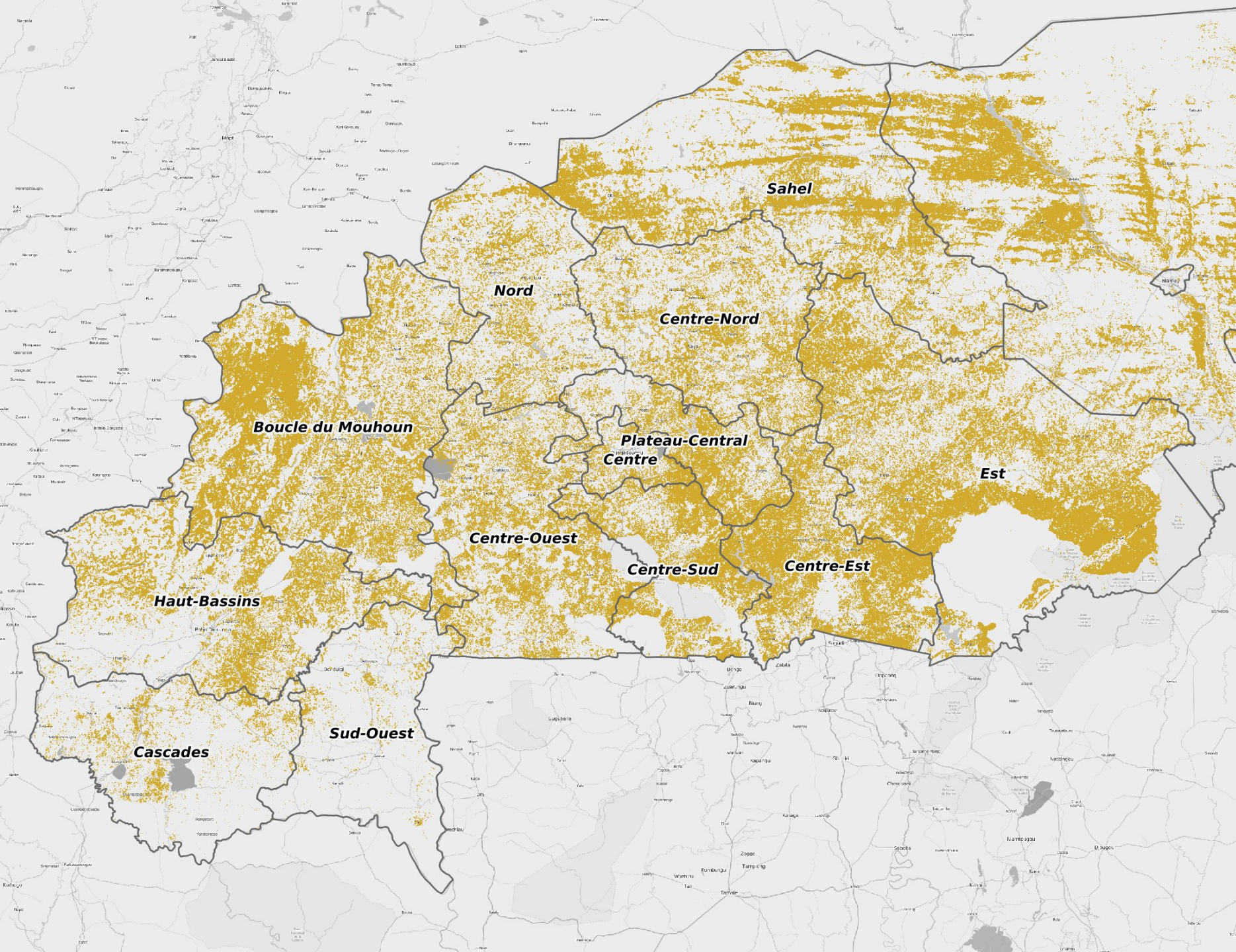
Analytics

Historical trends



● Cultivated area



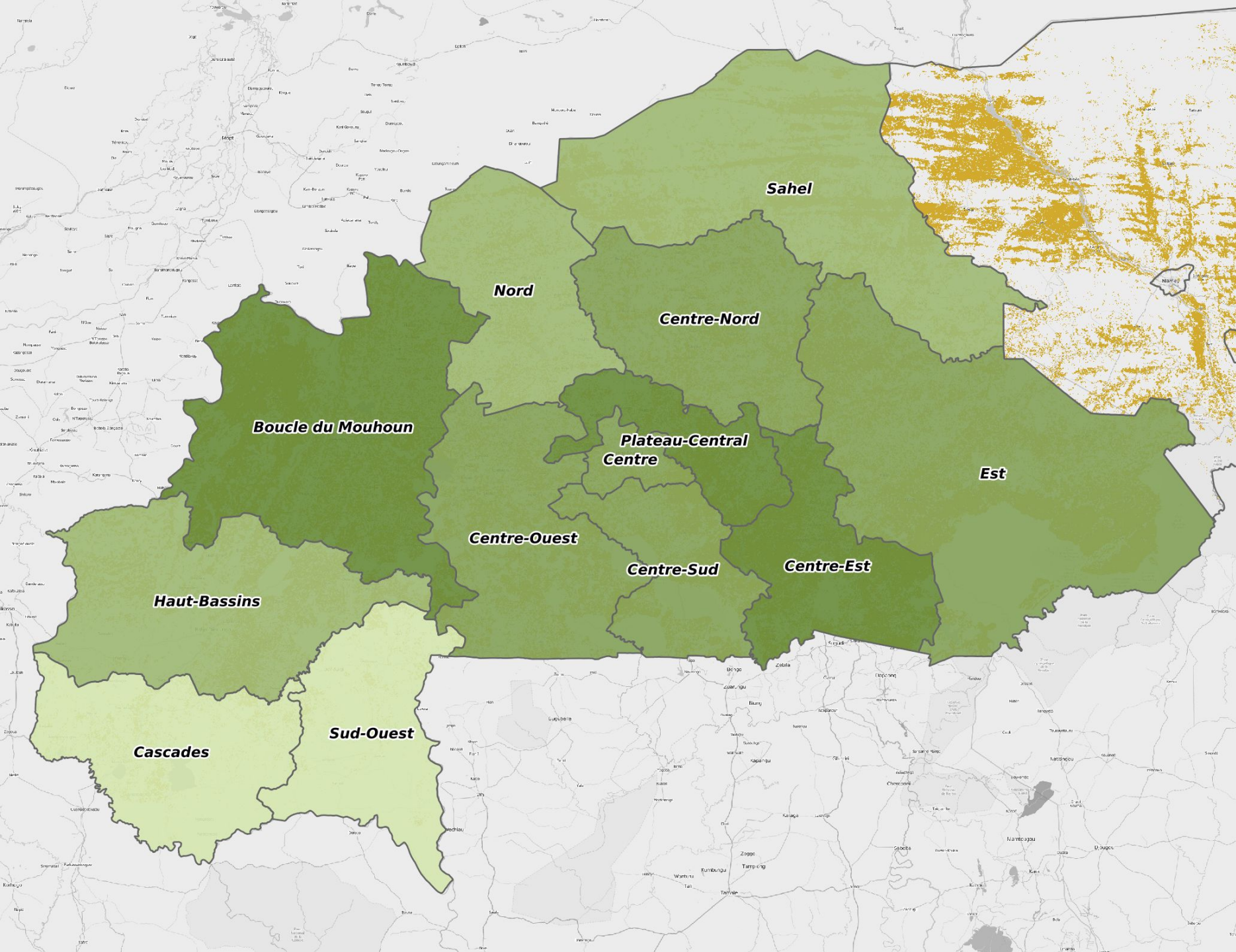


Analytics

Zoom in to compare provinces

 Cultivated area





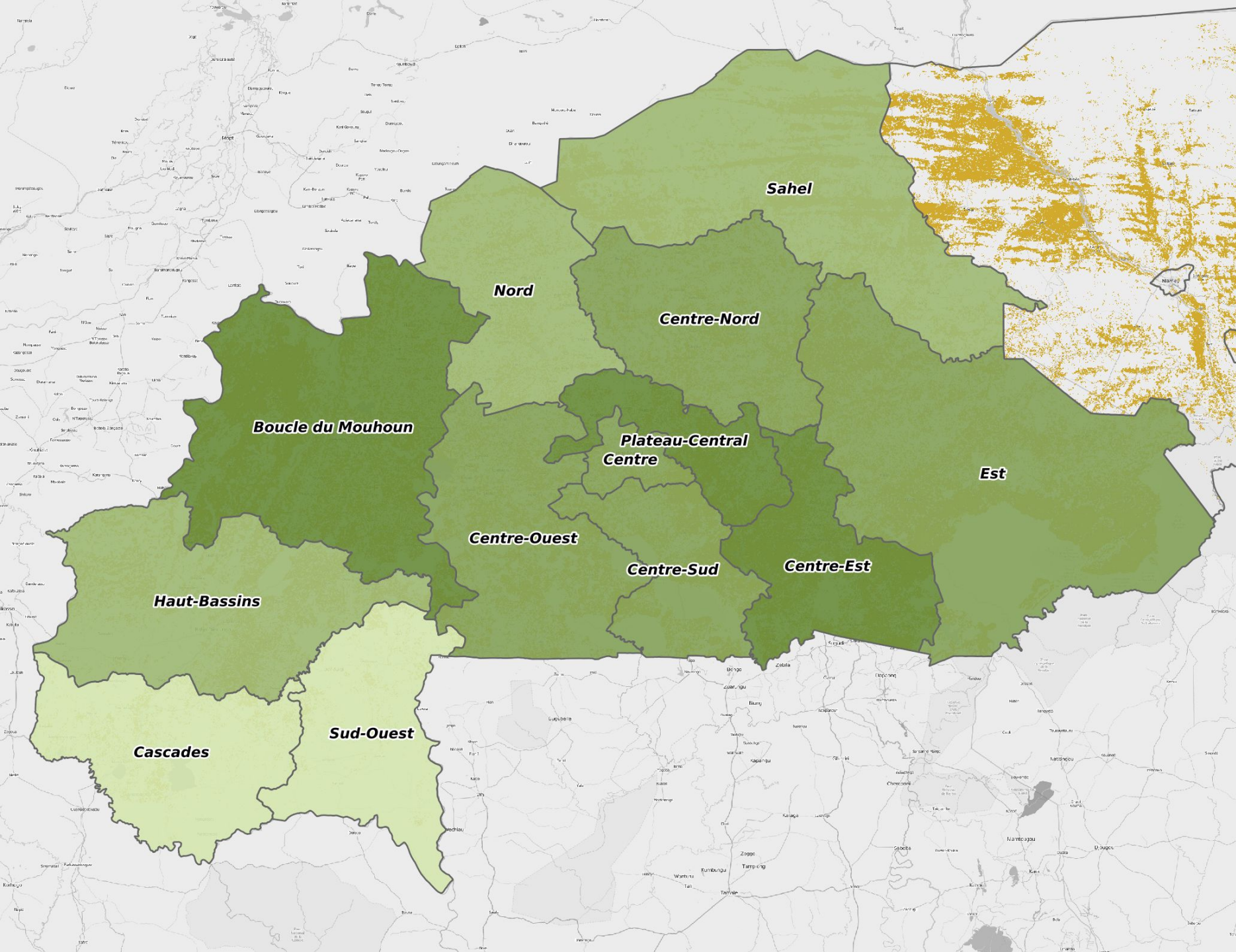
Analytics

Zoom in to compare provinces

Add data components like **productivity**

 Cultivated area





Analytics

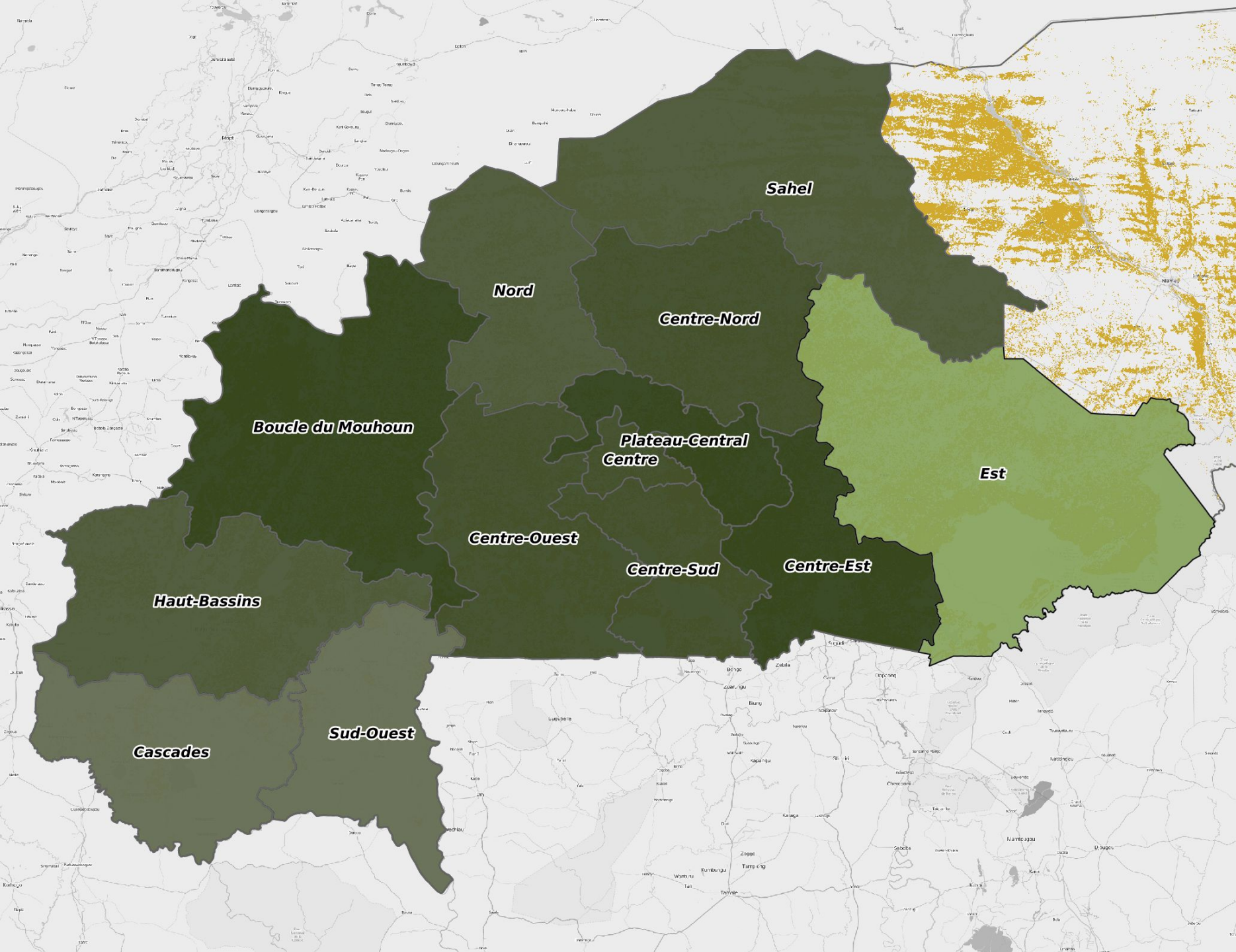
Zoom in to compare provinces

Add data components like **productivity**

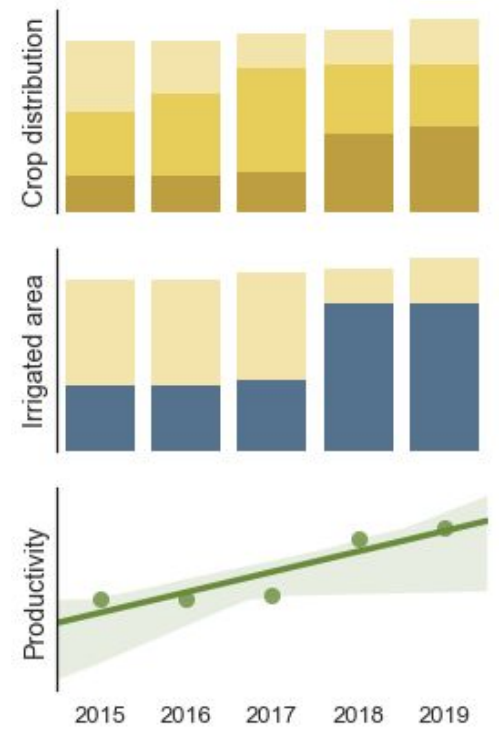
And get **reports**

 Cultivated area



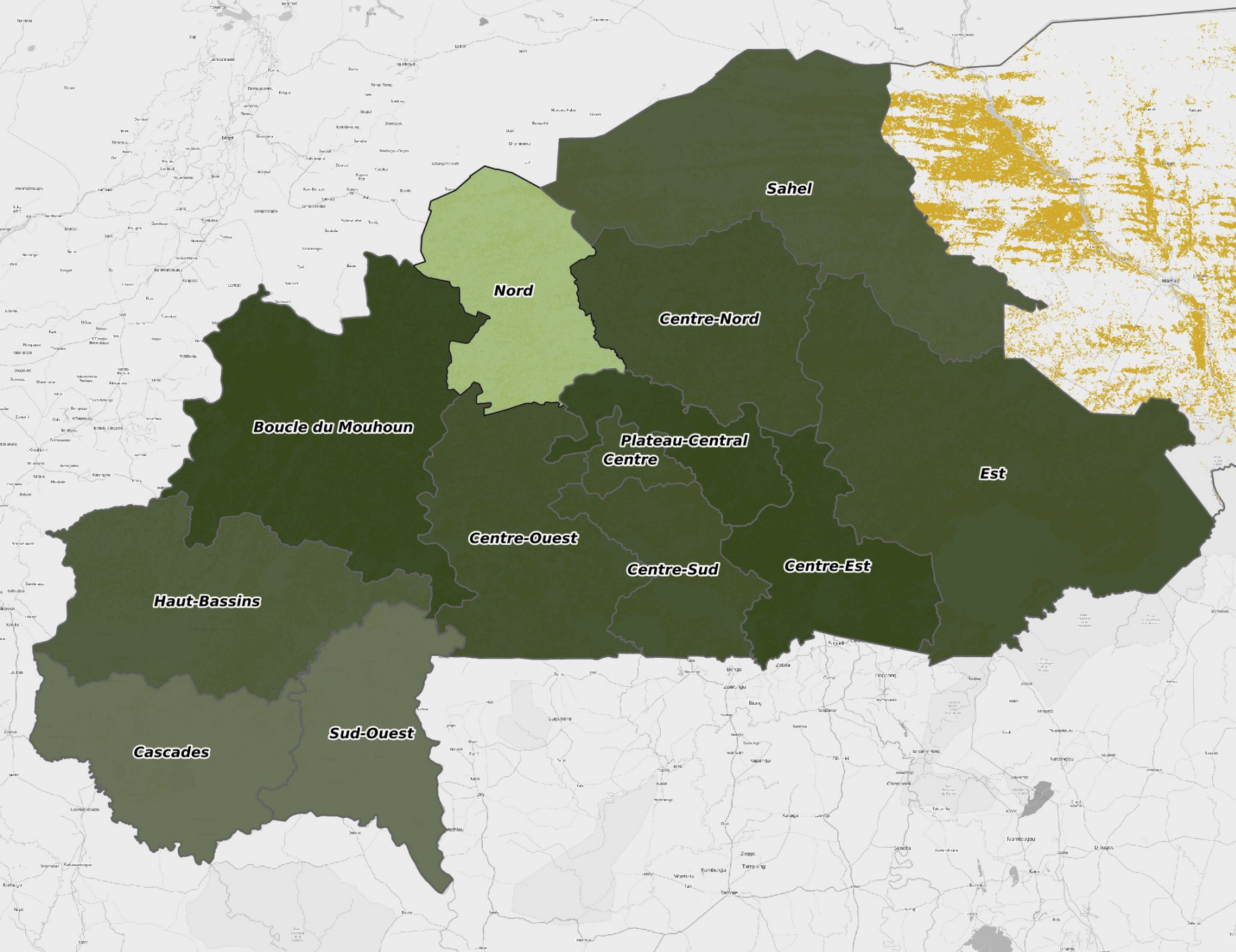


Est analytics



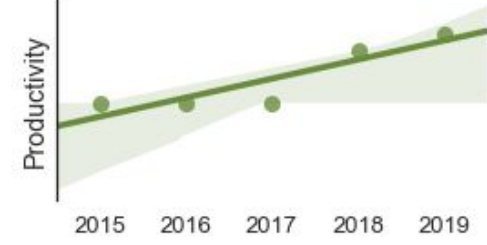
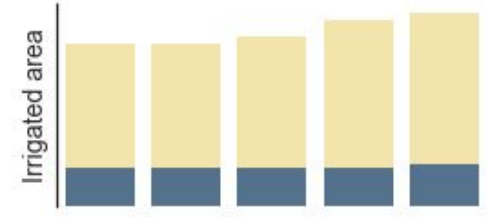
- Cultivated area
- Maize
- Rice
- Irrigated area





Nord

analytics



- Cultivated area
- Maize
- Rice
- Irrigated area



COPERNICUS LAND MONITORING SERVICE

Produces **excellent data components** but
it's not an end user product or service.



COPERNICUS LAND MONITORING SERVICE

Take 1 step back to move **2 steps forward**:
focus on being **B2B** data component provider,
provide **high bandwidth** API access,
collect **success stories** from B2C parties



PROMISING DEVELOPMENTS

Analysis Ready Data (#ARD)



2018-03-21
@opencholmes
radiant.earth



Chris Holmes [Follow](#)

Product Architect @ Planet, Board Member @ Open Geospatial Consortium, Technical Fellow @ Radiant.Earth

May 21 · 2 min read

Join us in August for an Analysis Ready Data Interoperability workshop

I wrote about [Analysis Ready Data](#) a month ago (and Scott shared what [Planet is doing on ARD](#)), and a few of us have been plotting to bring together a wide variety of satellite imagery experts to try to really collaborate on interoperability between different satellite providers. We've secured some space at Planet's Mountain View office, to help keep the costs down, but we're aiming for a truly neutral, collaborative gathering to help move the earth observation industry forward. [Radiant.Earth](#), a new NGO working on 'earth imagery for impact', who have lead the convenings on [SpatioTemporal Asset Catalogs \(STAC\)](#), will be involved to make it not dominated by any vendor.



Never miss a story from **Planet Stories**, when you sign up for Medium. [Learn more](#)

GET UPDATES



We're hoping to have much wider interoperability than shown above, including Airbus, CBERS, UrtheCast, drone data and more





SATELLIGENCE

Arjen Vrielink / Director
vrielink@satelligence.com